

# Product Technical Sheet:

# Reznoclad Decorative HPL for Exteriors



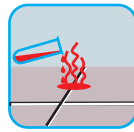
Easy to clean



Moisture Resistance



Strike Resistance



Chemical Effects Resistance



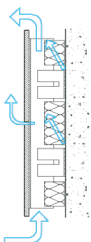
Abrasion Resistance



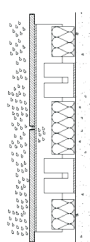
High Heat and Fire Resistance

Sl. No	PROPERTIES	TEST METHOD	ATTRIBUTES OF PERFORMANCE	UNIT OF MEASUREMENT	RESULTS (AS PER EN438-6)
<b>1 SURFACE QUALITY</b>					
1.1	Surface quality	EN 438-2.4	Spots, dirt and similar surface	mm <sup>2</sup> /m <sup>2</sup>	≤ 2
			Fibres, hairs and scratches	mm <sup>2</sup> /m <sup>2</sup>	≤ 20
<b>2 DIMENSIONAL PROPERTIES</b>					
2.1	Thickness	EN 438-2.5	Thickness tolerance	mm	5 ≤ T < 8: ± 0,4
2.2	Size	EN 438-2.6	Length and Width	mm	+10/-0
2.3	Straightness of edge	EN 438-2.7	Straightness of edges	mm/m	≤ 1,5
2.4	Squareness	EN 438-2.8	Squareness	mm/m	≤ 1,5
2.5	Flatness	EN 438-2.9	Flatness (measured on full-size sheet)	mm/m	6.0 ≤ T < 10,0: 5
<b>3 PHYSICAL PROPERTIES</b>					
3.1	Flexual Modulus	EN ISO 1 78	Stress	Mpa	≥ 9000
3.2	Flexual Strength	EN ISO 1 78	Stress	Mpa	≥ 80
3.3	Tensile Strength	EN ISO 527-2	Stress	Mpa	≥ 60
3.4	Density	EN ISO 1183	Density	gm/cm <sup>3</sup>	≥ 1,35
3.5	Resistance to impact with large diameter bill	EN 438-2.21	Indent dia.10mm 2 ≤ T < 6mm Drop Height	min.	≥ 1400
			Indent dia.10mm T ≥ 6mm - Drop Height	min.	≥ 1800
3.6	Resistance to Wet Conditions	EN 438-2.15	Mass increase - 2 ≤ T < 5mm	max. %	EGS- ≤ 7, EGF- ≤ 10
			Mass increase - T ≥ 5mm	max. %	EGS- ≤ 5, EGF- ≤ 8
			Appearance	Rating	≥ 4
3.7	Dimensional stability at elevated temperatures	EN 438-2.17	Cumulative dimensional change - 2 ≤ T < 5mm	Longitudinal %	≤ 0.40
				Transversal %	≤ 0.80
			Cumulative dimensional change - T ≥ 5mm	Longitudinal %	≤ 0.30
				Transversal %	≤ 0.60
<b>4 WEATHER RESISTANCE REQUIREMENTS</b>					
4.1	Resistance to Climatic Shock	EN 438-2.19	Thermal Shock Resistance- Appearance	Rating	≥ 4
4.2	Resistance to Artifical Weathring	EN 438-2.29	Contrast	Grey scale rating	≥ 3
			Appearance	Rating	≥ 4
<b>5 FIRE PERFORMANCES</b>					
5.1	Fire Reaction Classification	EN 135 01	Test as per EN 13823 (SBI test) and EN ISO 11925 -2 (Small-burner test)		
			Classification - 3 ≤ T < 6mm	Classification	B-s2, d0
			Classification - 6 ≤ T < 13mm	Classification	B-s1, d0

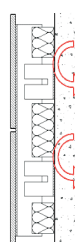
**Breathable facade for healthier buildings-** Reznoclad HPL is highly suited for ventilated facade systems.



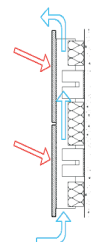
PERMEABILITY



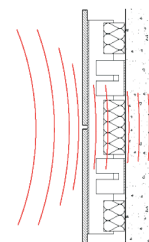
WATER PROTECTION



THERMAL INSULATION  
(Elimination of Heat Bridge)



SOLAR PROTECTION

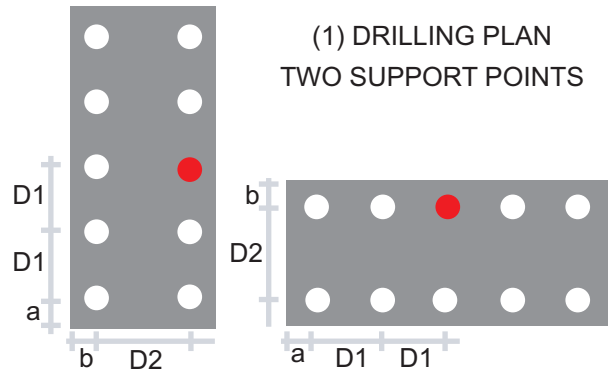


ACOUSTIC PROTECTION

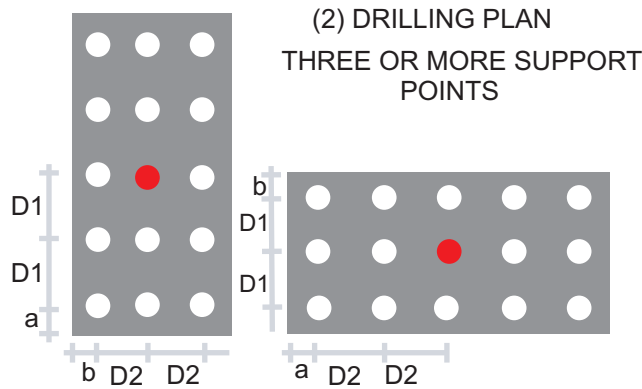
# Environment:

Reznoclad is committed to continuous improvement of environmental performances. These panels are not hazardous to health and does not pollute the environment. It is made up of 70% cellulose fibers and 30% thermosetting resins and does not contain asbestos or heavy metals. These panels does not emit gases, fumes, solvents or liquid substances.

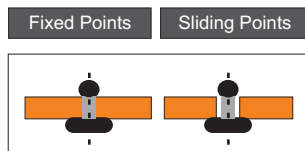
## Installation System



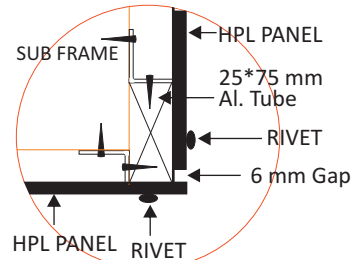
Thickness (mm)	MAX D1 (mm)	MAX D2 (mm)	a (mm)	b (mm)
6	500	500	20-80	20-40
8	650	650	20-80	20-40
10	800	800	20-90	20-50



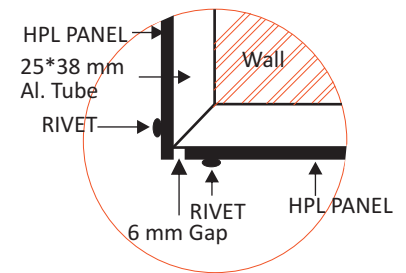
Thickness (mm)	MAX D1 (mm)	MAX D2 (mm)	a (mm)	b (mm)
6	550	550	20-80	20-40
8	700	700	20-80	20-40
10	950	950	20-90	20-60



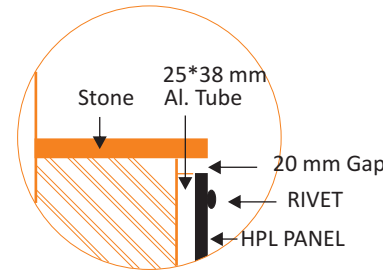
## Fixing Details



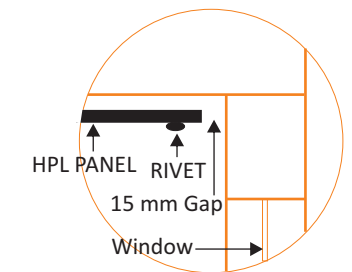
DETAIL VERTICAL CORNER



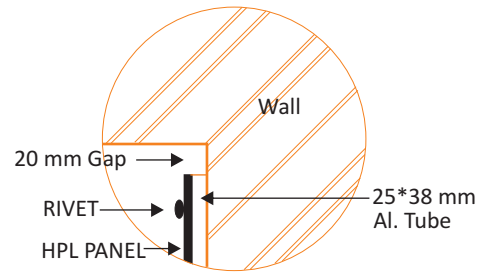
DETAIL HORIZONTAL DROP



DETAIL TOP STONE PARAPET



DETAIL INSIDE CORNER



CEILING JOINT

